



The services of Eisenbraun & Associates feature the technology of the Leica ScanStation 2 Laser Scanner. The benefit to the client is that data can be collected in an ultra-fast, highly accurate manner. The spatial data is used to create realistic, easy-to-understand 3D models of any object or space.

High speed laser measures a structure exactly as it exists, capturing data without making physical measurements.

Millions of survey points are now captured in less time than it takes for 100s of points using conventional equipment.

Detailed 3D point cloud created from multiple scans from different vantage points of a site; then used for making traditional CAD drawings, 3D CAD models or virtual fly-through animations.

High Resolution Photography also obtained by the scanning system: full dome, 360-degree images

For indoor and outdoor use, in all light levels – even total darkness

Eisenbraun & Associates is a regional surveying and engineering firm with a history of being a leader in early adoption of innovative technology. Established in 1976, the firm's owners and personnel are committed to excellence in the profession by providing quality technical service to each client.



Daniel Eisenbraun

is President of Eisenbraun & Associates and has provided leadership to the firm since its inception. A graduate of the SD School of Mines & Technology in Civil Engineering, he is a Licensed Professional Engineer in SD, NE, and MN and a Licensed Professional Surveyor in SD, MO, CO, and MN.



Brett Kennedy

is the Director of Surveying Services for the firm. He is a graduate of Southeast Technical Institute in Milford, NE, and is a Licensed Professional Surveyor in SD, ND, NE, IA, CO, MN, and KS. He is also a Certified Federal Surveyor.

Eisenbraun & Associates
Professional Engineers & Surveyors

High Definition Surveying
using 3D Laser Scanning

Eisenbraun & Associates
Professional Engineers & Surveyors

215 Walnut Street
Yankton, SD 57078

605-665-8092
www.eaweb.com

ARCHITECTURAL APPLICATIONS

Fast, Comprehensive,
Accurate & Reliable data

Eisenbraun & Associates
Professional Engineers & Surveyors

Innovative solutions ♦ Long-term value

ARCHITECTURAL APPLICATION

When you need measurements of a building or structure to be fast, accurate and comprehensive, depend on Eisenbraun and Associate's high definition surveying technology.

Now you can utilize the technology of 3D laser scanning to capture all measurements of a building or structure, including structural intricacies or deformations.

HOW IT WORKS

Successful renovation of existing buildings requires the architectural design team to have an extensive amount of reliable data. Skilled surveyors from Eisenbraun & Associates will use a high speed 3D laser scanner to obtain scans from varying vantage points of the structure.

Millions of survey points will be captured in less time than it takes for hundreds of points using conventional equipment. In addition to providing measurements, data collected will include high resolution, full-dome photography. Users can navigate through the site, zooming in and capturing every detail of the building – inside and out.

Multiple scans from different vantage points of a site can be expertly combined by our engineers into the type of documentation that will best suit you. A single 3D point cloud can be used for creating CAD drawings, 3D CAD models or virtual fly-through animations.



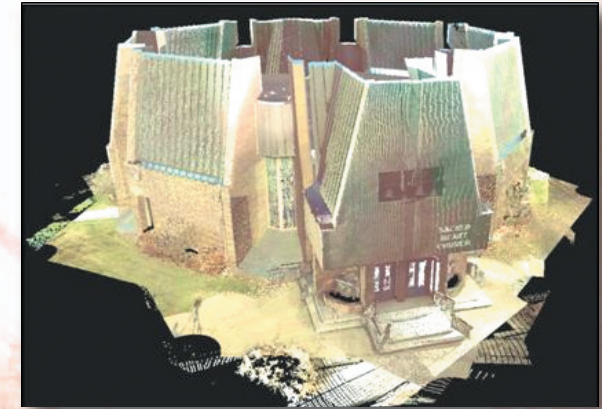
Entire buildings or specific interior rooms can be scanned with equal effectiveness using the high definition 3D laser scanner.



Every measurement and detail of this building's early 20th century Italian marble staircase was captured.



Fast, accurate measurement data is provided by the Leica ScanStation 2 laser scanner. The instrument works indoors and outside, in all light levels – even total darkness.



Unprecedented data collection capabilities with high definition surveying!

This uniquely-shaped church was scanned with the laser scanner. What looks like a photo is actually a point cloud consisting of 91 million survey points that are so dense that they take on the appearance of a photo. Every detail in the scanner's field of view is captured and can be accessed later.

With application software a user can rotate the 3D images to any perspective, zoom in tightly on details of the building, and measure angles and distances between any of the objects. Having accurate measurements of every point of this building will ensure a successful remodeling project.

Eisenbraun & Associates
Professional Engineers & Surveyors